

See discussions, stats, and author profiles for this publication at: <https://www.researchgate.net/publication/327397543>

Metformin prolonged the survival of diffuse large B-cell lymphoma and grade 3b follicular lymphoma patients responding to first-line treatment with rituximab plus cyclophosphamide,...

Article in *Translational Cancer Research* · August 2018

DOI: 10.21037/tcr.2018.07.20

CITATIONS

4

READS

160

13 authors, including:



Xing Fan

National Institutes of Health

36 PUBLICATIONS 521 CITATIONS

[SEE PROFILE](#)



Li Wang

Nanjing Normal University

389 PUBLICATIONS 5,704 CITATIONS

[SEE PROFILE](#)



Metformin prolonged the survival of diffuse large B-cell lymphoma and grade 3b follicular lymphoma patients responding to first-line treatment with rituximab plus cyclophosphamide, doxorubicin, vincristine, and prednisone: a prospective phase II clinical trial

Xing Fan^{1#}, Hui-Juan Zhong^{1#}, Bing-Bing Zhao^{2#}, Bin-Shen Ou Yang^{3#}, Yan Zhao¹, Jing Ye⁴, Yi-Ming Lu⁴, Chao-Fu Wang³, Hong Xiong², Sai-Juan Chen¹, Anne Janin^{4,5}, Li Wang^{1,4}, Wei-Li Zhao^{1,4}

¹State Key Laboratory of Medical Genomics, Shanghai Institute of Hematology, Shanghai Rui Jin Hospital, Shanghai Jiao Tong University School of Medicine, Shanghai 200025, China; ²Department of Hematology, Shanghai Xuhui Center Hospital, Shanghai 200031, China; ³Department of Pathology, Shanghai Rui Jin Hospital, Shanghai 200025, China; ⁴Pôle de Recherches Sino-Français en Science du Vivant et Génomique, Laboratory of Molecular Pathology, Shanghai 200025, China; ⁵U1165 Inserm/Université Paris 7, Hôpital Saint Louis, Paris, France

Contributions: (I) Conception and design: WL Zhao, L Wang; (II) Administrative support: WL Zhao, A Janin, SJ Chen; (III) Provision of study materials or patients: X Fan, Y Zhao, J Ye, L Wang; (IV) Collection and assembly of data: HJ Zhong, BB Zhao, H Xiong; (V) Data analysis and interpretation: X Fan, YM Lu, BS Ou Yang, CF Wang; (VI) Manuscript writing: All authors; (VII) Final approval of manuscript: All authors.

[#]These authors contributed equally to this work.

Correspondence to: Wei-Li Zhao. State Key Laboratory of Medical Genomics, Shanghai Institute of Hematology, Shanghai Rui Jin Hospital, Shanghai 200025, China. Email: zhao.weili@yahoo.com; Li Wang. State Key Laboratory of Medical Genomics, Shanghai Institute of Hematology, Shanghai Rui Jin Hospital, Shanghai 200025, China. Email: wl_wangdong@126.com.

Background: With the addition of rituximab to chemotherapy, the response rates of diffuse large B-cell lymphoma (DLBCL) and follicular lymphoma grade 3b (FL3b) have been significantly improved. However, recurrence remains to be the hinder of long survival of the patients. Metformin is a widely used anti-diabetic agent and has an anti-lymphoma effect through adenosine monophosphate (AMP)-activated protein kinase activation *in vitro* and *in vivo*.

Methods: We conducted a single center, prospective, single-arm phase II clinical trial of metformin for maintenance therapy in patients with DLBCL or FL3b who achieved complete remission after the first-line treatment with rituximab plus cyclophosphamide, doxorubicin, vincristine, and prednisone (R-CHOP), and analyzed the efficacies of metformin maintenance.

Results: The patients received metformin maintenance had significantly better overall survival (OS) than those without metformin maintenance, especially for the diabetic patients. Patients with age >60, elevated serum lactate dehydrogenase (LDH), or International Prognostic Index (IPI) score ≥ 2 were benefit from metformin maintenance, as well as those with tumor cell expressing Ki67 $\geq 80\%$, or with non-germinal center B-cell-like (non-GCB) subtype. In multivariate analysis, age >60, elevated serum LDH and diabetic patients without metformin maintenance were the three independent unfavorable prognostic factors for OS.

Conclusions: Metformin could thus be a safe and economic maintenance agent for elderly and high-risk patients not suitable for transplantation.

Keywords: Diffuse large B-cell lymphoma (DLBCL); follicular lymphoma grade 3b (FL3b); metformin; survival; maintenance therapy

Submitted Apr 06, 2018. Accepted for publication Jul 17, 2018.

doi: 10.21037/tcr.2018.07.20

View this article at: <http://dx.doi.org/10.21037/tcr.2018.07.20>

Introduction

Diffuse large B-cell lymphoma (DLBCL) is the most common type of non-Hodgkin's lymphoma, accounting for 35–40% of the patients. Follicular lymphoma grade 3b (FL3b) shares similar biology characteristics of DLBCL and is recommended to be treated as DLBCL (1). Rituximab plus CHOP (cyclophosphamide, doxorubicin, vincristine and prednisone, R-CHOP) has become the standard first-line treatment for DLBCL, with 75–80% of the response rate. However, 30–40% of the responded patients inevitably relapse (2,3). Although autologous stem-cell transplantation (ASCT) decreased the relapse rate in high-risk DLBCL patients (4), the toxicity of ASCT limits its application in elder and fragile patients. New therapeutic strategies need to be explored in terms of maintenance therapy in DLBCL.

Metformin belongs to the biguanide class of oral hypoglycemic agents. Experimental data support that metformin can inhibit tumor cell growth in breast, prostate, colon and pancreatic cancer (5–7). Clinical studies also confirm the effect of metformin to improve the prognosis of breast, lung, and bladder cancer patients (8–10). As for hematological malignancies, metformin improves clinical outcomes and reduces mortality in patients with multiple myeloma and acute lymphoblastic leukemia (11,12). Recent mechanism study revealed the activation of adenosine monophosphate (AMP)-activated protein kinase (AMPK) in metformin-treated cells and xenograft models (13). Moreover, combination of oral metformin with doxorubicin may induce cell autophagy and increase chemosensitivity (14).

In the present study, we designed a single-arm prospective study to assess clinical efficacy and safety of metformin in patients with DLBCL and FL3b.

Methods

Patients

We conducted a prospective, single-arm phase II clinical trial, evaluating the therapeutic effect of metformin as maintenance therapy in patients with DLBCL or FL3b achieved complete remission. From 2013 January to 2017 July, 245 DLBCL or FL3b patients achieved complete response (CR) after 6 cycles of R-CHOP-21 were enrolled. Among them, 60 patients were willing to take part in this prospective clinical trial with metformin maintenance, while the rest 185 patients were referred as the control group (*Figure 1*). All the patients signed their informed consent. The study was performed in

accordance with the Declaration of Helsinki and the protocol was approved by the Ethics Committee of Shanghai Rui Jin Hospital (2012-26). The trial was registered on <http://www.chictr.org.cn> (ChiCTR-OIN-17012130).

Diagnosis and staging systems

Pathological diagnosis was established according to World Health Organization (WHO) classification (15). The staging work-up included history and physical examination, blood cell counts and serum chemistry, bone marrow aspiration or biopsy, endoscopy of gastrointestinal tracts, chest and abdominal tomography scan or positron emission tomography and computed tomography (PET-CT).

Diabetes diagnosis was based on the 1999 WHO diagnostic criteria (16) for diabetes: (I) typical symptoms of diabetes (including polydipsia, polyuria and unexplained weight loss), random blood glucose ≥ 11.1 mmol/L (random blood glucose refers to any time of blood glucose); (II) or fasting blood glucose ≥ 7.0 mmol/L; (III) or 2 hours blood glucose ≥ 11.1 mmol/L in 75 g glucose load test. Peoples with no symptoms of diabetes need to repeat the blood glucose another day to determine the diagnosis. Impaired glucose tolerance (IGT) definition: fasting blood glucose < 7.0 mmol/L, postprandial 2 h blood glucose 7.8–11.1 mmol/L. Fasting blood glucose damage (IFG) definition: fasting blood glucose 6.1–7.0 mmol/L, 2 h postprandial blood glucose < 7.8 mmol/L.

Treatment and response

All of the 245 patients received chemotherapy (6 standard dose of CHOP regimens) combined with Rituximab (375 mg/m^2). All of the 245 patients achieved CR, according to the WHO response criteria (17). Briefly, CR was defined as no evidence of residual disease, partial response (PR) with at least a 50% reduction in tumor burden from the onset of treatment, progressive disease (PD) or relapse was defined as the presence of a newly developed lesion or more than 25% increase in the product of 2 diameters of at least one tumor. Stable disease (SD) was defined as the state of neither PR nor PD. Assessment of treatment response was evaluated by follow-up clinical, radiological, or laboratory studies, as determined by the clinician. The patients had metformin orally at a dose of 1.0 g, twice a day for 2-year maintenance. If adverse events, such as diarrhea, occurred, metformin was reduced to 1.0 g qd. If the events resolved, the dose of metformin was restored to 1.0 g bid.

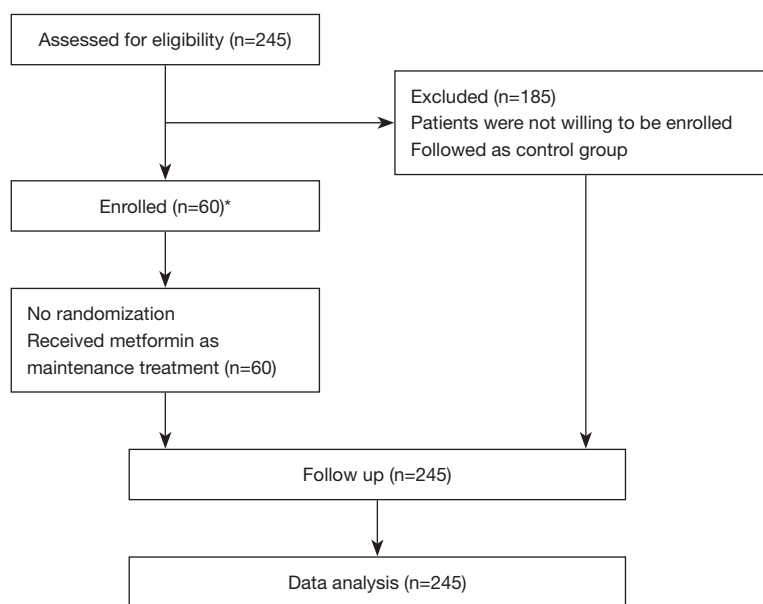


Figure 1 Flowchart of the clinical trial. *, if patients were taking metformin as the treatment for diabetic care during the chemotherapy, and they preferred to continue using metformin, we recruited them into diabetic patients with metformin subgroup.

Immunohistochemistry assay

Immunohistochemistry was performed on 5 μ m-paraffin sections with an indirect method (EnVision) using the primary antibody against MYC (1:100), CD10 (1:100), Bcl-6 (1:100), MUM-1 (1:100), Ki67 (1:100), (Abcam, Cambridge, USA), and anti-rabbit/rat-IgG antibody from Dako (Carpinteria, CA, USA) as the second antibody. Bcl-2, Bcl-6 and MYC positive were determined as previously reported (18-20).

Statistical analysis

The progression-free survival (PFS) time is defined as the time of diagnosis to the progression of disease/relapse or death. The overall survival (OS) time is defined as the time of diagnosis to death or the last follow-up time. Survival functions were estimated using the Kaplan-Meier method and compared by the log-rank test. Chi-square was used in comparison the clinical data of patients with different treatment. Multivariate survival analysis was performed using a Cox regression model. Significant variables in the univariate analysis were selected as variables in the multivariate analysis for survival. $P < 0.05$ was considered statistically significant. All statistical analyses were evaluated using Statistical Package for the Social Sciences (SPSS) 23.0

software (SPSS Inc., Chicago, Illinois, USA).

Results

Patient characteristics

The characteristics of the 245 patients at diagnosis were summarized in *Table 1*. The median follow-up was 24.3 months (range, 5.8–46.5 months), the median age was 57 years (range, 19–79 years), and the male-to-female ratio was 1.23:1. Most patients had good performance status [Eastern cooperative oncology group (ECOG) performance status 0–1, 90.2%] and the International Prognostic Index (IPI) indicating low-risk was 75.9%.

Taking into account that some of the patients in the group had diabetes, we divided the patients into four groups: diabetic patients with metformin maintenance (DM + Met, $n=21$), diabetic patients without metformin maintenance (DM + non-Met, $n=22$), non-diabetic patients with metformin maintenance (non-DM + Met, $n=39$), and non-diabetic patients without metformin maintenance (non-DM + non-Met, $n=163$), there were no statistical difference of gender, Ann Arbor stage, ECOG score, IPI and serum lactate dehydrogenase (LDH) among the 4 groups (*Table 1*). Higher percentage of elderly patients was

Table 1 Characteristics of patients

Characteristics	Total	Met		Non-Met		P value
		DM	Non-DM	DM	Non-DM	
Gender						0.211
Male	135	16	21	13	85	
Female	110	5	18	9	78	
Age (year)						0.003
≤60	152	6	24	11	111	
>60	93	15	15	11	52	
Performance status (ECOG)						0.173
<2	221	20	37	19	145	
≥2	24	0	3	3	18	
Ann Arbor stage						0.341
I-II	147	11	20	16	100	
III-IV	98	10	19	6	63	
Extranodal involvement						0.919
<2	183	17	29	16	121	
≥2	62	4	10	6	42	
LDH						0.728
Abnormal	76	8	13	5	50	
Normal	169	13	26	17	113	
IPI risk						0.936
Low	142	10	23	13	96	
Low-mediate	43	4	7	6	26	
Mediate-high	45	6	7	2	30	
High	15	1	2	1	11	

Met, metformin; DM, diabetic; ECOG, eastern cooperative oncology group performance status; LDH, lactate dehydrogenase; IPI, International Prognostic Index.

present in the group of diabetic patients with metformin maintenance (*Table 1*).

Patients with metformin maintenance had longer survival time when compared with those without metformin maintenance

The 3-year OS and PFS of 245 patients was 95.2% and 90.2%, respectively. The OS of the four groups had significant difference ($P=0.006$): the DM + Met group and non-DM + Met had the best prognosis with 3-year OS both

as 100%, followed by non-DM + non-Met and DM + non-Met group. The PFS of these four groups remained similar ($P=0.562$, *Figure 2*).

Metformin improved the survival time of patients with age >60, elevated LDH, and IPI ≥2

To further define the benefit of the patients from metformin maintenance, different unfavorable factors were analyzed. The survival data showed that among the DLBCL group with age >60 ($P=0.015$), elevated serum LDH ($P=0.002$),

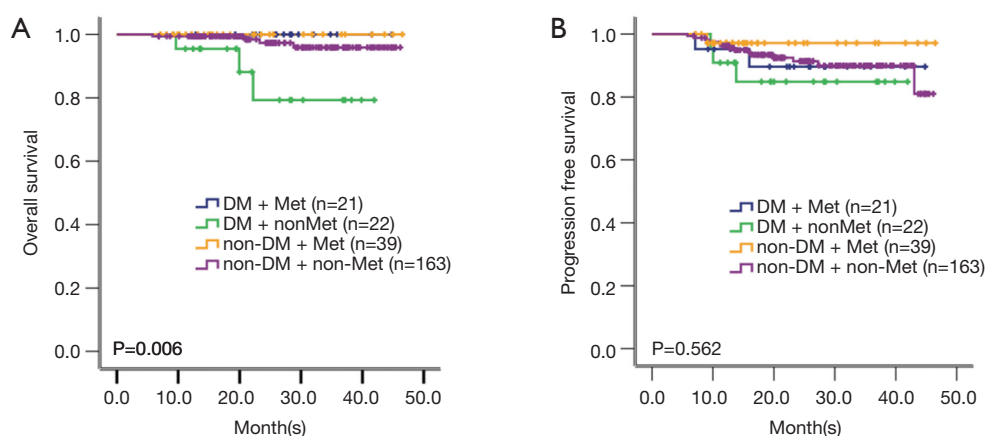


Figure 2 OS and PFS curves of the 245 patients with DLBCL or FL3b. (A) OS of the patients: DM patients with Met maintenance (DM + Met, n=21), DM patients without Met maintenance (DM + non-Met, n=22), non-DM patients with Met maintenance (non-DM + Met, n=39), and non-DM DLBCL patients without Met maintenance (non-DM + non-Met, n=163); (B) PFS of these patients. OS, overall survival; PFS, progression-free survival; DLBCL, diffuse large B-cell lymphoma; FL3b, follicular lymphoma grade 3b, DM, diabetic; Met, metformin.

or IPI ≥ 2 ($P=0.003$), the DM patients without metformin maintenance had worse survival than those of non-DM patients (Figure 3A,B,C). However, among the patients with age ≤ 60 , or normal LDH, or IPI < 2 , there was no statistical difference among the four groups (Figures S1A,B,C).

Metformin improved the survival time of patients with tumor cells Ki67 ($\geq 80\%$) and non-germinal center B-cell-like (non-GCB) phenotype

Among all, 123 patients presented Ki67 $\geq 80\%$, and 125 were non-GCB subtype according to the Hans algorithm. In the group with tumor cells Ki67 $\geq 80\%$ or with non-GCB subtype, distinct differences were observed among the four groups ($P=0.029$ and $P=0.047$, Figure 3D,E). However, among the tumor samples with Ki67 $< 80\%$, there was no statistical difference (Figure S1D). Since all the patients with GCB subtype, no matter in Met group or in non-Met group, are still alive, no difference was found among the four groups (data not shown).

Metformin reduced the relapse rate and mortality

During metformin treatment as a maintenance agent, the relapse rate was much lower than the patients without metformin (5.0% vs. 9.2%). The median relapse time of the patients with or without metformin was 9.0 and 12.7 months, respectively, without significant difference between the two

groups ($P=0.422$). There were only three patients relapsed with metformin maintenance, all of which presented with IPI score ≥ 2 . During metformin maintenance, the mortality of the patients was 0, while that without metformin was 3.8%. There were 7 patients passed away during the follow-up, all of them were related with lymphoma relapse and progression (Table 2).

Age > 60 , elevated serum LDH and diabetics patients without metformin maintenance were the three independent unfavorable factors in DLBCL

In univariate analysis, age > 60 , elevated serum LDH and diabetics patients without metformin maintenance were unfavorable factors for OS (Table 3). These three parameters were further included in the multivariate analysis, age > 60 ($P=0.045$, HR 9.368, 95% CI: 1.051–83.546), elevated serum LDH ($P=0.024$, HR 7.293, 95% CI: 1.302–40.864) and diabetics patients without metformin maintenance ($P=0.044$, HR 2.625, 95% CI: 1.027–6.713) were independent prognostic factors for the inferior OS.

Metformin was tolerated well in the patients

There were about 10% of patients had diarrhea within the first month of metformin administration. Metformin was thus reduced into 1.0 g qd, until the diarrhea resolved, the dose of metformin was restored to 1.0 g bid. More

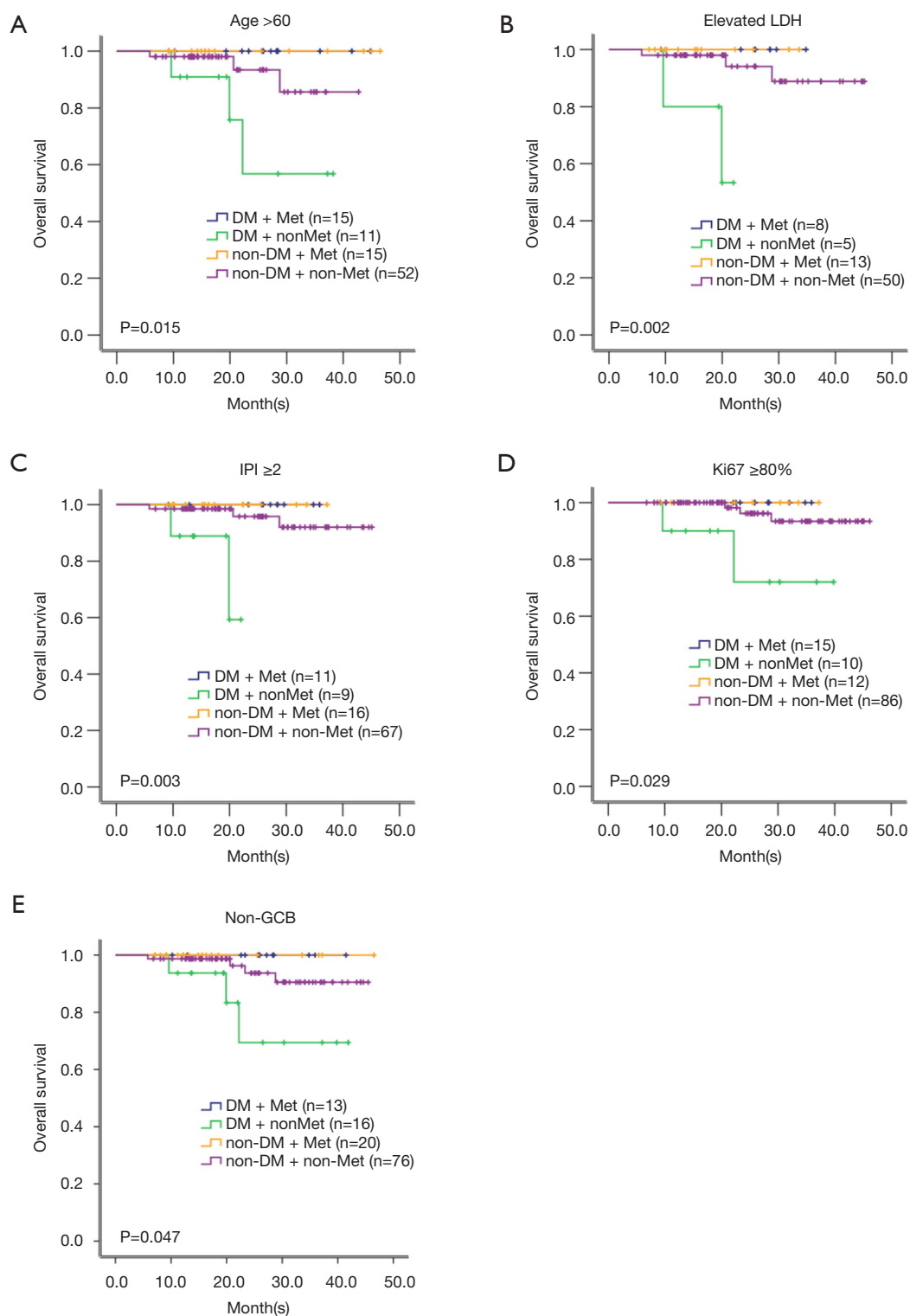


Figure 3 OS of patients with different high-risk factors. (A) OS of patients with age >60; (B) OS of patients with elevated serum LDH; (C) OS of patients with IPI ≥ 2 ; (D) OS of patients with tumor cell expressing Ki67 $\geq 80\%$; (E) OS of patients with non-GCB phenotype patients. OS, overall survival; LDH, lactate dehydrogenase; IPI, International Prognostic Index; GCB, germinal center B-cell-like.

Table 2 Characteristics of relapsed patients

ID	Gender	Age	Subgroup	Relapse time (months)	Second-line therapy	Response	Death
2	M	58	Non-DM + non-Met	43.03	R-ICE	Yes	No
9	F	35	Non-DM + non-Met	19.93	R-ICE	Yes	No
26	M	33	Non-DM + non-Met	8.83	EPOCH	Yes	No
27	F	60	Non-DM + non-Met	23.17	R-ICE	Yes	No
36	M	50	Non-DM + non-Met	16.10	Velcade + GDP	No	Yes
59	M	58	Non-DM + non-Met	12.70	R-DHAP	Yes	No
66	F	49	Non-DM + non-Met	27.27	R-ICE	Yes	No
83	F	35	Non-DM + Met	9.03	ICE	Yes	No
134	F	75	Non-DM + non-Met	15.93	R-ICE	No	Yes
136	F	65	Non-DM + non-Met	11.13	ICE	Yes	No
149	F	67	DM + non-Met	10.03	ICE	No	Yes
158	M	66	DM + non-Met	13.80	R-ICE	No	Yes
163	M	62	DM + Met	15.97	Velcade + GDP	Yes	No
166	F	69	DM + non-Met	9.63	Radiotherapy + ICE	No	Yes
175	M	71	Non-DM + non-Met	5.80	ICE	No	Yes
181	M	67	Non-DM + non-Met	7.13	ICE	Yes	No
206	M	68	Non-DM + non-Met	11.13	ICE	Yes	No
227	F	57	Non-DM + non-Met	9.43	ICE	Yes	No
228	F	61	Non-DM + non-Met	13.47	R-ICE	No	Yes
229	M	57	DM + Met	7.10	ICE	Yes	No

M, male; F, female; Met, metformin; DM, diabetic; R, Rituximab; ICE, ifosfamide + carboplatin + etoposide; EPOCH, etoposide + prednisone + vincristine + cyclophosphamide + doxorubicin hydrochloride; GDP, gemcitabine + dexamethasone + cisplatin; DHAP, dexamethasone + cytarabine + cisplatin.

Table 3 Analysis of prognostic factors for OS (univariate analysis)

Characteristic	P	HR	95% CI
Age >60 years	0.016	13.681	1.638–114.246
Sex (male)	0.433	0.549	0.123–2.457
Ann Arbor stage (III/IV)	0.268	1.473	0.742–2.925
B symptom	0.736	1.340	0.245–7.316
ECOG >2	0.620	0.742	0.229–2.408
Extra nodal involvements ≥2	0.701	1.379	0.267–7.123
LDH >200	0.023	6.710	1.299–34.664
Ki-67 ≥80%	0.500	1.759	0.341–9.088
GCB/non-GCB phenotype	0.200	1.753	0.743–4.137
DM without metformin maintenance	0.015	2.661	1.212–5.844

OS, overall survival; HR, hazard ratio; CI, confidence interval; ECOG, eastern cooperative oncology group performance status; LDH, lactate dehydrogenase; GCB, germinal center B-cell-like; DM, diabetic.

than 50% of these diarrhea patients could tolerate 1.0 g bid of metformin afterwards. In addition, almost all the patients experienced a slight weight loss after metformin administration, which could be tolerated. The fasting glucose was regularly monitored in the patients in this trial every 3 months. The fasting glucose was normal during the follow-up in the non-diabetic patients. However, the median fasting glucoses was 5.96 mmol/L (range, 4.44–9.92) and 7.05 mmol/L (range, 5.19–13.37), in the DM patients with and without metformin maintenance, respectively.

Discussion

To our knowledge, this is the first prospective study of metformin as maintenance therapy in patients with DLBCL or FL3b achieved complete remission. Metformin is a widely used and economic oral agent for type 2 diabetes with mild adverse effects. The anti-tumor mechanism of metformin is multiple (21). As previously reported by our group, metformin activates AMPK through LKB1-dependent mechanism, resulting in inhibition of mTOR, induction of autophagic death, and increased sensitivity of chemotherapy (14). Anti-cancer activity of metformin was also due to inhibition of PP2A-dependent phosphatase activity through disruption of PP2A complex (22). Iglesias *et al.* (23) studied xenograft mouse models of endometrial cancer and found that metformin displaces active K-Ras from cell membrane via a PKC-dependent pathway and inhibits Ras signaling.

Previous retrospective studies showed that metformin can increase the remission rate and survival time of the patients with lung, breast, bladder and multiple myeloma (8–12), but rarely reported in non-Hodgkin's lymphoma. Diabetic patients have a higher prevalence and mortality of tumors than non-diabetic patients. An analysis of 196 centers, including 178,547 patients in Asian showed diabetes was closely associated with a high risk of tumor mortality (HR 1.26, 95% CI: 1.21–1.31), including lymphoma (HR 1.39, 95% CI: 1.04–1.86) (24). Consistent with these results, our prospective study showed that metformin maintenance can significantly prolong the survival time of the DLBCL patients, especially in diabetic subgroup. Koo *et al.* (25) retrospectively analyzed the influence of concomitant drugs on the prognosis of DLBCL patients receiving rituximab-based regimens. Among the 213 DLBCL patients, 47 had statins, 182 had metformin and 186 had aspirin. Survival analysis was made according to these concomitant medicines, and results showed that

patients receiving metformin during the chemotherapy had no significant advantage in survival when compared with those without metformin. Another retrospective study was conducted to compare the efficacy of metformin usage on prognosis in 24 DLBCL diabetics patients, and showed that metformin usage could improve objective response rate, CR rate and PFS, as compared with other diabetic agents (26). The opposite results of the two studies, probably, were due to the different population of patients; the former was conducted in the whole DLBCL cohort and the latter in the diabetic subgroup.

The survival time of the patients with DLBCL and FL3b had been greatly improved by the R-CHOP regimen, but the relapse remains the obstacle for CR patients to obtain long-term survival. Accumulating data revealed that elder, elevated serum LDH, high Ki67, non-GCB subtype are the risk factors correlated with lymphoma relapse (24,27–29). Our study showed that metformin maintenance can effectively extend the survival time in these high-risk patients.

There was a significant improvement on OS rather than PFS in the patients with metformin maintenance, perhaps due to the relapsed patients in the metformin maintenance group, are still alive after second-line chemotherapy. The relapsed patients, on the contrary, in non-metformin maintenance group died after second-line treatment. The difference might be related to the growth-inhibitory and drug-sensitizing effect of metformin on lymphoma cells, targeting mTOR pathway through AMPK activation (14).

Finally, both univariate and multivariate analysis showed that age >60, elevated serum LDH and diabetic patients without metformin maintenance were the three independent unfavorable factors for patients with DLBCL and FL3b.

In conclusion, this study provides novel rationale of a new strategy for elderly and high-risk patients unsuitable for ASCT.

Acknowledgements

None.

Footnote

Conflicts of Interest: The authors have no conflicts of interest to declare.

Ethical Statement: The study was performed in accordance

with the Declaration of Helsinki and the protocol was approved by the Ethics Committee of Shanghai Ruijin Hospital (2012-26). The trial was registered on <http://www.chictr.org.cn> (ChiCTR-OIN-17012130).

References

1. NCCN Guidelines. Available online: https://www.nccn.org/professionals/physician_gls/default.aspx
2. Coiffier B, Thieblemont C, Van Den Neste E, et al. Long-term outcome of patients in the LNH-98.5 trial, the first randomized study comparing rituximab-CHOP to standard CHOP chemotherapy in DLBCL patients: a study by the Groupe d'Etudes des Lymphomes de l'Adulte. *Blood* 2010;116:2040-5.
3. Delarue R, Tilly H, Mounier N, et al. Dose-dense rituximab-CHOP compared with standard rituximab-CHOP in elderly patients with diffuse large B-cell lymphoma (the LNH03-6B study): a randomised phase 3 trial. *Lancet Oncol* 2013;14:525-33.
4. Stiff PJ, Dahlberg S, Forman SJ, et al. Autologous bone marrow transplantation for patients with relapsed or refractory diffuse aggressive non-Hodgkin's lymphoma: value of augmented preparative regimens--a Southwest Oncology Group trial. *J Clin Oncol* 1998;16:48-55.
5. Dowling RJ, Zakikhani M, Fantus IG, et al. Metformin inhibits mammalian target of rapamycin-dependent translation initiation in breast cancer cells. *Cancer Res* 2007;67:10804-12.
6. Zakikhani M, Dowling RJ, Sonenberg N, et al. The effects of adiponectin and metformin on prostate and colon neoplasia involve activation of AMP-activated protein kinase. *Cancer Prev Res (Phila)* 2008;1:369-75.
7. Wang LW, Li ZS, Zou DW, et al. Metformin induces apoptosis of pancreatic cancer cells. *World J Gastroenterol* 2008;14:7192-8.
8. Mazzone PJ, Rai H, Beukemann M, et al. The effect of metformin and thiazolidinedione use on lung cancer in diabetics. *BMC Cancer* 2012;12:410.
9. Jiralspong S, Palla SL, Giordano SH, et al. Metformin and pathologic complete responses to neoadjuvant chemotherapy in diabetic patients with breast cancer. *J Clin Oncol* 2009;27:3297-302.
10. Peng M, Su Q, Zeng Q, et al. High efficacy of intravesical treatment of metformin on bladder cancer in preclinical model. *Oncotarget* 2016;7:9102-17.
11. Vu K, Busaidy N, Cabanillas ME, et al. A randomized controlled trial of an intensive insulin regimen in patients with hyperglycemic acute lymphoblastic leukemia. *Clin Lymphoma Myeloma Leuk* 2012;12:355-62.
12. Wu W, Merriman K, Nabaah A, et al. The association of diabetes and anti-diabetic medications with clinical outcomes in multiple myeloma. *Br J Cancer* 2014;111:628-36.
13. Green AS, Chapuis N, Maciel TT, et al. The LKB1/AMPK signaling pathway has tumor suppressor activity in acute myeloid leukemia through the repression of mTOR-dependent oncogenic mRNA translation. *Blood* 2010;116:4262-73.
14. Shi WY, Xiao D, Wang L, et al. Therapeutic metformin/AMPK activation blocked lymphoma cell growth via inhibition of mTOR pathway and induction of autophagy. *Cell Death Dis* 2012;3:e275.
15. Swerdlow SH, Campo E, Harris NL, et al. editors. WHO Classification of Tumours of Haematopoietic and Lymphoid Tissues. Revised 4th Edition. Lyon: IARC, 2008.
16. World Health Organization. Definition, diagnosis and classification of diabetes mellitus and its complications: Report of a WHO Consultation. Part 1. Diagnosis and classification of diabetes mellitus. Geneva: World Health Organization, 1999.
17. Cheson BD, Horning SJ, Coiffier B, et al. Report of an international workshop to standardize response criteria for non-Hodgkin's lymphomas. NCI Sponsored International Working Group. *J Clin Oncol* 1999;17:1244.
18. Chen YW, Hu XT, Liang AC, et al. High BCL6 expression predicts better prognosis, independent of BCL6 translocation status, translocation partner, or BCL6-deregulating mutations, in gastric lymphoma. *Blood* 2006;108:2373-83.
19. Barrans S, Crouch S, Smith A, et al. Rearrangement of MYC is associated with poor prognosis in patients with diffuse large B-cell lymphoma treated in the era of rituximab. *J Clin Oncol* 2010;28:3360-5.
20. Hans CP, Weisenburger DD, Greiner TC, et al. Confirmation of the molecular classification of diffuse large B-cell lymphoma by immunohistochemistry using a tissue microarray. *Blood* 2004;103:275-82.
21. Safe S, Naira V, Karki K. Metformin-induced anticancer activities: recent insights. *Biol Chem* 2018;399:321-35.
22. Kickstein E, Krauss S, Thornhill P, et al. Biguanide metformin acts on tau phosphorylation via mTOR/protein phosphatase 2A (PP2A) signaling. *Proc Natl Acad Sci U S A* 2010;107:21830-5.
23. Iglesias DA, Yates MS, van der Hoeven D, et al. Another surprise from Metformin: novel mechanism of action via

- K-Ras influences endometrial cancer response to therapy. *Mol Cancer Ther* 2013;12:2847-56.
24. Chen Y, Wu F, Saito E, et al. Association between type 2 diabetes and risk of cancer mortality: a pooled analysis of over 771,000 individuals in the Asia Cohort Consortium. *Diabetologia* 2017;60:1022-32.
 25. Koo YX, Tan DS, Tan IB, et al. Effect of concomitant statin, metformin, or aspirin on rituximab treatment for diffuse large B-cell lymphoma. *Leuk Lymphoma* 2011;52:1509-16.
 26. Alkhatib Y, Abdel Rahman Z, Kuriakose P. Clinical impact of metformin in diabetic diffuse large B-cell lymphoma patients: a case-control study. *Leuk Lymphoma* 2017;58:1130-4.
 27. Park JH, Yoon DH, Kim DY, et al. The highest prognostic impact of LDH among International Prognostic Indices (IPIs): an explorative study of five IPI factors among patients with DLBCL in the era of rituximab. *Ann Hematol* 2014;93:1755-64.
 28. Song MK, Chung JS, Lee JJ, et al. High Ki-67 expression in involved bone marrow predicts worse clinical outcome in diffuse large B cell lymphoma patients treated with R-CHOP therapy. *Int J Hematol* 2015;101:140-7.
 29. Rosenwald A, Wright G, Chan WC, et al. The use of molecular profiling to predict survival after chemotherapy for diffuse large-B-cell lymphoma. *N Engl J Med* 2002;346:1937-47.

Cite this article as: Fan X, Zhong HJ, Zhao BB, Ou Yang BS, Zhao Y, Ye J, Lu YM, Wang CF, Xiong H, Chen SJ, Janin A, Wang L, Zhao WL. Metformin prolonged the survival of diffuse large B-cell lymphoma and grade 3b follicular lymphoma patients responding to first-line treatment with rituximab plus cyclophosphamide, doxorubicin, vincristine, and prednisone: a prospective phase II clinical trial. *Transl Cancer Res* 2018;7(4):1044-1053. doi: 10.21037/tcr.2018.07.20

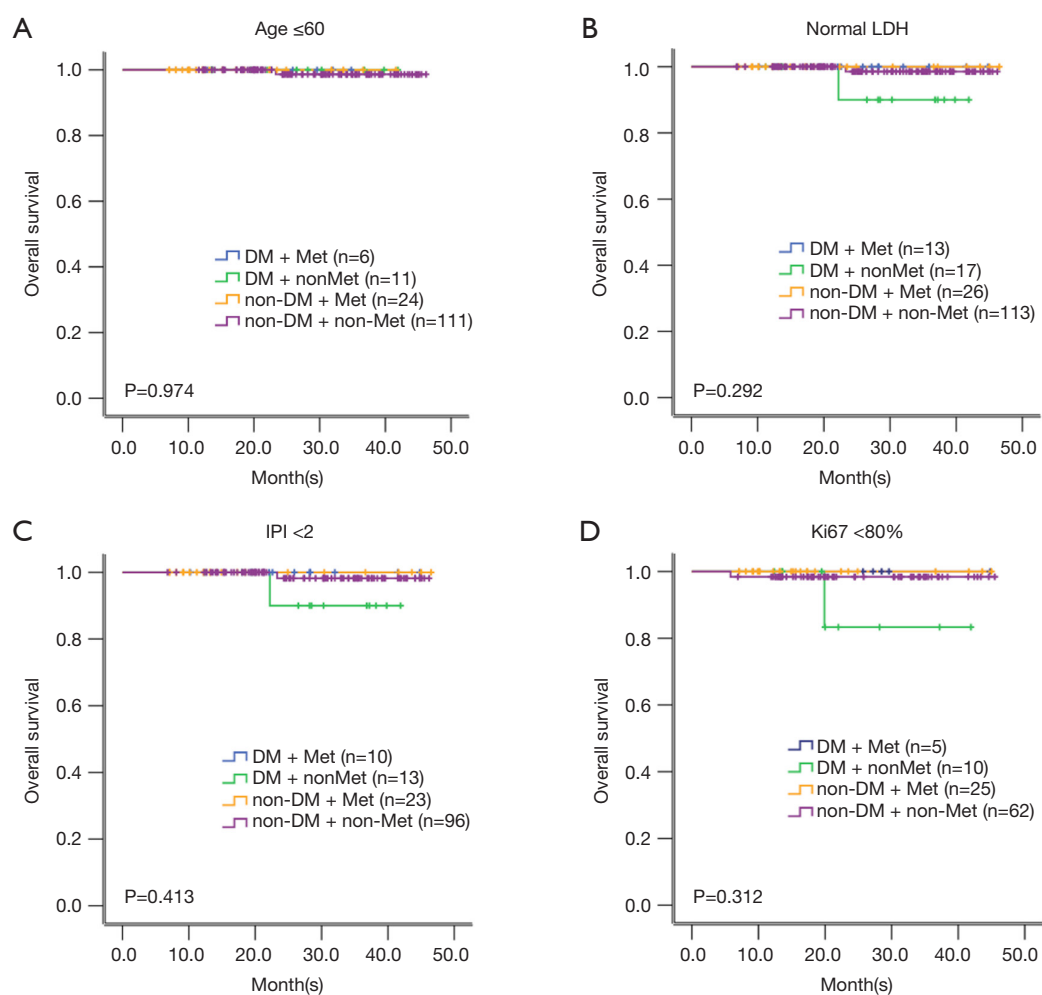


Figure S1 OS curves of patients without high-risk factors. (A) OS of patients with age ≤ 60 ; (B) OS of patients with normal LDH; (C) OS of patients with IPI < 2 ; (D) OS of patients with tumor cell Ki67 expression $< 80\%$. OS, overall survival; LDH, lactate dehydrogenase; IPI, International Prognostic Index.